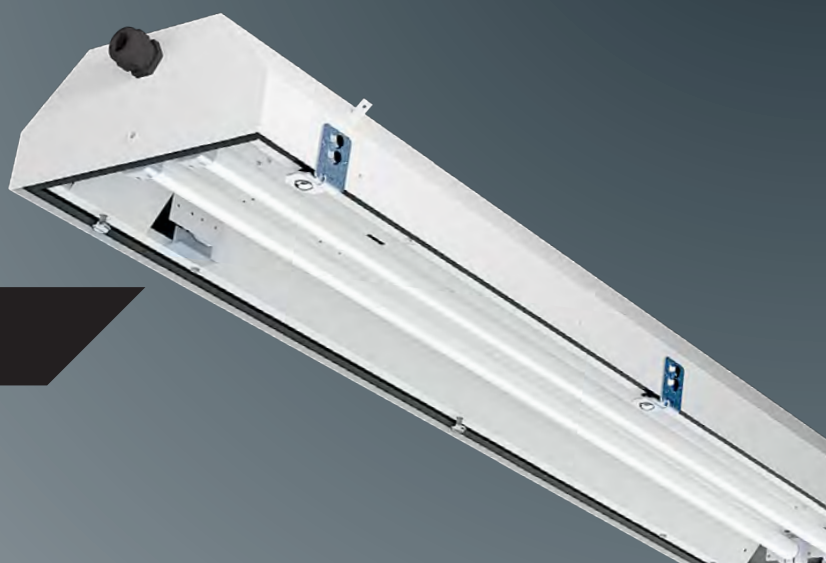


# PITBUL-Ex

IP 65



**Application:** premises with danger of explosion. Light fixture is certified by FTZÚ Ostrava-Radvanice (certificate FTZU 04 ATEX 0143X).

**Ballast:** Electronic ballast 220-250 V/50-60 Hz AC, 220-250 V Electronic ballast 110-127 V/50-60 Hz AC, 110-127 V DC

**Body:** White painted metal sheet RAL9003

**Cover:** Tempered safety glass

**Reflector:** White painted metal sheet RAL9003

**Fastening:** Fastening with M8 screws through the base, with ceiling brackets or bracket grips screwed to the sides of the body, suspension via suspension brackets, into false ceiling by means of recessed frame.

**Connection:** WAGO® Ex terminal block, max. diameter of wires 4,0 mm<sup>2</sup>

**Standard equipment:** 1 pc sealing cable gland, 1 pc sealing plug

**On request:** Em – non-maintained emergency lighting (1 h, 3 h)

**MULTI** – maintained emergency lighting (1 h, 3 h)

**1/3 F** – one or three phase through-wiring connection

**NEREZ** – body from stainless steel sheet

**RAL** – another colour finishing

**NANO** – light fixture protected by special nanolayer (hydrophobic, oleophobic or antibacterial protection)

		AxBxC (mm)	
<b>- electronic ballast with disconnecter, -20°C ≤ t<sub>a</sub> ≤ +40°C</b>			
053800	PITBUL-Ex-118-D, 1x18 W		701 x 302 x 130
053801	PITBUL-Ex-218-D, 2x18 W		701 x 302 x 130
053802	PITBUL-Ex-318-D, 3x18 W		701 x 302 x 130
053803	PITBUL-Ex-418-D, 4x18 W		701 x 362 x 130
053804	PITBUL-Ex-136-D, 1x36 W		1312 x 302 x 130
053805	PITBUL-Ex-236-D, 2x36 W	T26/G13	1312 x 302 x 130
053806	PITBUL-Ex-336-D, 3x36 W		1312 x 302 x 130
053807	PITBUL-Ex-436-D, 4x36 W		1312 x 362 x 130
053808	PITBUL-Ex-158-D, 1x58 W		1611 x 302 x 130
053809	PITBUL-Ex-258-D, 2x58 W		1611 x 302 x 130
053810	PITBUL-Ex-358-D, 3x58 W		1611 x 302 x 130
053811	PITBUL-Ex-458-D, 4x58 W		1611 x 362 x 130

		AxBxC (mm)	
<b>- electronic ballast without disconnecter, -20°C ≤ t<sub>a</sub> ≤ +40°C</b>			
053812	PITBUL-Ex-118-WOD, 1x18 W		701 x 302 x 130
053813	PITBUL-Ex-218-WOD, 2x18 W		701 x 302 x 130
053814	PITBUL-Ex-318-WOD, 3x18 W		701 x 302 x 130
053815	PITBUL-Ex-418-WOD, 4x18 W		701 x 362 x 130
053816	PITBUL-Ex-136-WOD, 1x36 W		1312 x 302 x 130
053817	PITBUL-Ex-236-WOD, 2x36 W	T26/G13	1312 x 302 x 130
053818	PITBUL-Ex-336-WOD, 3x36 W		1312 x 302 x 130
053819	PITBUL-Ex-436-WOD, 4x36 W		1312 x 362 x 130
053820	PITBUL-Ex-158-WOD, 1x58 W		1611 x 302 x 130
053821	PITBUL-Ex-258-WOD, 2x58 W		1611 x 302 x 130
053822	PITBUL-Ex-358-WOD, 3x58 W		1611 x 302 x 130
053823	PITBUL-Ex-458-WOD, 4x58 W		1611 x 362 x 130

<b>- special equipment</b>	
053940	Set of bracket grips with accessory (2 pcs)
053941	Recessed frame 1/2/3x18W – 384,4 x 775 mm (mounting hole 323 x 742 mm)
053942	Recessed frame 4x18W – 443,4 x 775 mm (mounting hole 383 x 742 mm)
053943	Recessed frame 1/2/3x36W – 384,4 x 1385 mm (mounting hole 323 x 1353 mm)
053944	Recessed frame 4x36W – 443,4 x 1385 mm (mounting hole 383 x 1353 mm)
053945	Recessed frame 1/2/3x58W – 384,4 x 1685 mm (mounting hole 323 x 1653 mm)
053946	Recessed frame 4x58W – 443,4 x 1685 mm (mounting hole 383 x 1653 mm)
054935	Set of stainless steel ceiling brackets (2 pcs)
004642	Suspension bracket M8 (1 pc)
051146	Pole bracket for Ø50 mm

Other types (without disconnecter, through-wiring connection) on request

### Application of light fixtures in areas with danger of explosion

	Marking of external influences	Classification areas	
		Marking	Formation prescription
Danger of explosion of flammable dust	BE3N1	ZONA 21	ČSN EN 60079-14 ČSN EN 60079-10-2
Danger of explosion of flammable gases and vapors	BE3N2	ZONA 1	ČSN EN 60079-14 ČSN EN 60079-10-1

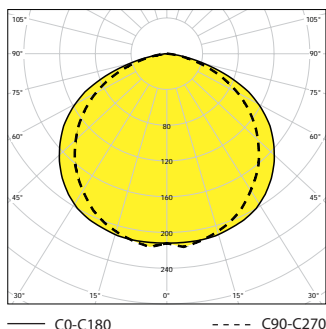
PITBUL-Ex-D	PITBUL-Ex-WOD
Ⓜ II 2G Ex d e ib mb IIC T4 Gb	Ⓜ II 2G Ex d e ib mb IIC T4 Gb
Ⓜ II 2D Ex t IIC Db T60°C; IP 65	Ⓜ II 2D Ex t IIC Db T 60°C; IP 65

### System of marking and overview of the approved variant of light fixtures

PITBUL-Ex-xyy-D	PITBUL-Ex with disconnecter
PITBUL-Ex-xyy-2D	PITBUL-Ex with two disconnectors and two ballast for two different voltages
PITBUL-Ex-xyy-WOD	without disconnecter

x – marking number of lamps (1/2/3/4), yy – lamp type (18/36/58)

PITBUL-Ex, 4x58W, IP65



FTZÚ 04 ATEX 0143X

